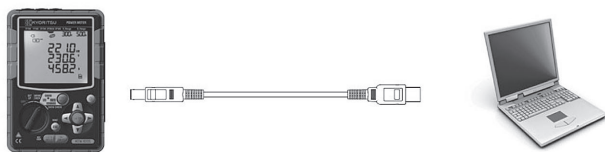


# Installation Manual for Windows 8

## KEW Windows for KEW6305



KEW6305

If you are using Windows 8(32/64bit), install the special software “KEW Windows for KEW6305” supplied with KEW6305 before starting to communicate with the instrument.

- \* Internet access is required to install “KEW Windows for KEW6305” on Windows 8.
- \* Before installing this application software, the following three should be installed: 1.“KEW WindowsV2”, 2.“KEW Windows for KEW6305” and 3. USB driver. That is, three different installation procedures should be done.

## 1. Introduction

### ● Interface

This instrument is equipped with USB and Bluetooth interfaces.  
Communication method : USB Ver2.0  
Bluetooth : Bluetooth Ver2.1+EDR (Class2)  
Compliant profile: SPP

Following can be done by USB/ Bluetooth communication.

- \* Downloading files in the internal memory of the instrument to a PC
- \* Making settings for the instrument via a PC
- \* Displaying the measured results on a PC as graphs in real-time.

### · OS(Operation System)

For supported OS, please check the version label of the CD case.

### · Display

1024 × 768 dots, 65536 colors or more

### · HDD (Hard-disk space required)

1Gbyte or more (including Framework)

### · .NET Framework (3.5 or more)

### ● Trademark

- Windows® is a registered trademark of Microsoft in the United States.
- Bluetooth is a registered trademark of Bluetooth SIG.

The latest software is available for download from our homepage.  
<http://www.kew-ltd.co.jp>

1

## 2. Installing the “KEW Windows for KEW6305”

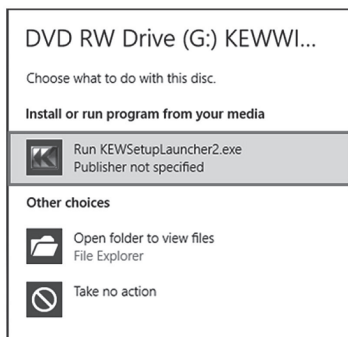
(1) Followings shall be checked before installing the software.

- To prepare your system to install this software, please close all open programs.
- Be sure NOT to connect the instrument with a USB until installation completes.
- Installation shall be done with Administrator right.
- To use KEW Windows for KEW6305, .NET Framework 3.5 is required.  
If .NET Framework 3.5 is not installed in your PC, it will be automatically installed when installing this application.  
Internet connection is required to install .NET Framework 3.5.

(2) Insert the CD-ROM in your PC's CD drive. Then following pop-up will appear at the upper right on the screen. Left-click on this box.

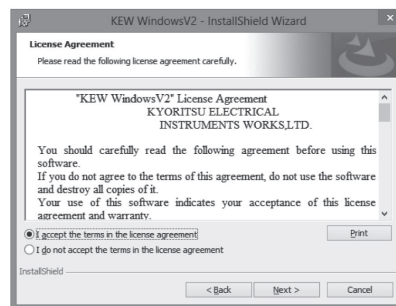
DVD RW Drive (E:) KEWWIN6305V104  
Tap to choose what happens with this disc.

Click and select “Run KEWSetupLauncher2.exe” when the following box appears.  
If User Account Control dialog box appears, click “Yes”.



If above dialog box does not appear, run “KEWSetupLauncher2.exe” from the CD.

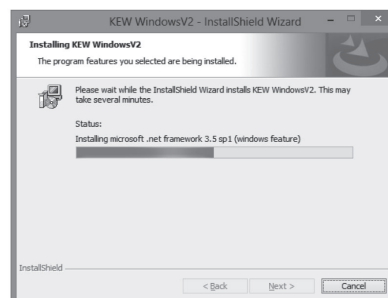
(3) Read through and understand the License Agreement and click “I accept...”, and then click “Next”.



(4) Click “Next” after entering the user information and other supplementary information.

(5) Confirm the information on installation, and then click “Install” to start an installation.

The following box will appear if .NET Framework3.5 is not installed in your PC.



If a message requiring restarting your PC is displayed, click “Yes” and restart your PC. Run “KEWSetupLauncher2.exe” from the CD after restarting the PC. Restarting your computer is essential to install the application properly.

2

- (6) Click “Finish” when “InstallShield Wizard Complete” dialogue box appears.



- (7) When above installation wizard completes, subsequent installation initiates automatically. If you rebooted your PC at step (5), double click CD drive at My computer to show the following window.



- (8) Repeat above step (3) through (6) and completes the installation.

#### How to un-install the PC Software:

Access to the “Control Panel” in the Start Menu at the lower left on the Windows screen, and double click on the “Add/ Remove Programs” to remove the “KEW WindowsV2” and “KEW Windows for KEW6305”.

If the Security Warning message appears, click on the “Install this driver software anyway”. (It is no problem to continue installing because operation has already been verified.)



- (4) Installation completes when the following window appears. Click “Finish”.

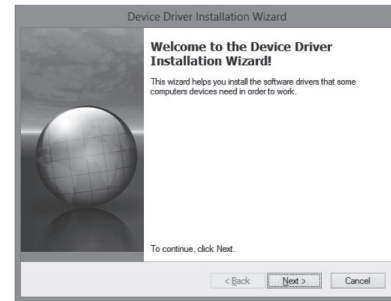


The USB driver has been successfully installed. Power on KEW6305 first, and then connect to you PC.

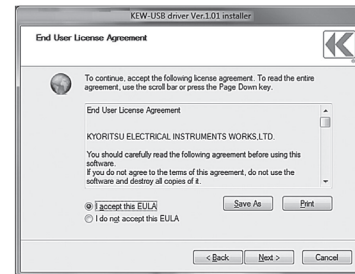
**To restart the interrupted USB driver installation process, right click on the CD drive and click “Open”. Click and start “kewusb101\_setup.exe” in the “DRIVER” folder.**

## 3. Installing the USB driver

- (1) When the KEW Windows for KEW6305 has been successfully installed in your computer, following dialogue box appears to start installing the USB driver. Click “Next”.



- (2) Read through and understand the End User License Agreement and click “I accept...”, and then click “Next”.



- (3) When the following confirmation message appears, after clicking “Next”, click “Install”.



3

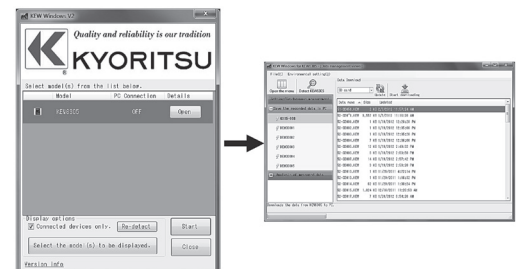
## 4. Starting the “KEW Windows for KEW6305”

Click the “KEW WindowsV2” icon on your desktop, or click “Start”-> “KEW”-> “KEW WindowsV2”.

Ensure that KEW6305 gets started before connecting KEW6305 to your PC. Then start KEW WindowsV2.

The main window for “KEW WindowsV2” appears. Select “KEW6305” and click “Start” or double click on “KEW6305” to get KEW6305 started.

Click “Close” or close button (x) on the right-top to end the program.



For further instructions, please read the instruction manual. Click (Double click) the desktop shortcut to “KEW Windows for KEW6305 MANUAL”.



**KYORITSU ELECTRICAL  
INSTRUMENTS  
WORKS, LTD.**

2-5-20, Nakane, Meguro-ku,  
Tokyo, 152-0031 Japan  
Phone: +81-3-3723-0131  
Fax: +81-3-3723-0152  
Factory: Ehime, Japan

[www.kew-ltd.co.jp](http://www.kew-ltd.co.jp)