

## Installation Manual for "KEWReport"

This manual contains explanations how to install the special application and the USB driver on Windows 8 PCs.

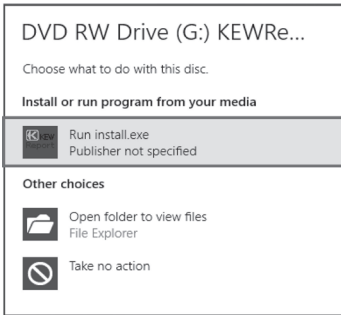
### 1. Installation of KEWReport

- (1) The following should be checked before installing this application.
  - To prepare your system for installation, please close all open programs.
  - Be sure NOT to connect the instrument with the USB until installation completes.
  - Installation shall be done with Administrator right.

- (2) Insert the CD-ROM in your PC's CD drive. Then following pop-up will appear at the upper right on the screen. Left-click on this box.

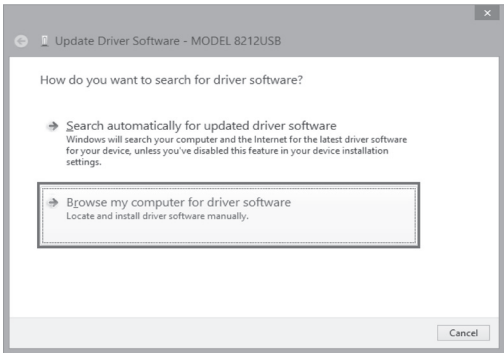
DVD RW Drive (G:) KEWReportV221  
Tap to choose what happens with this disc.

- (3) Click and select "Run install.exe" when the following box appears. If User Account Control dialog box appears, click "Yes".

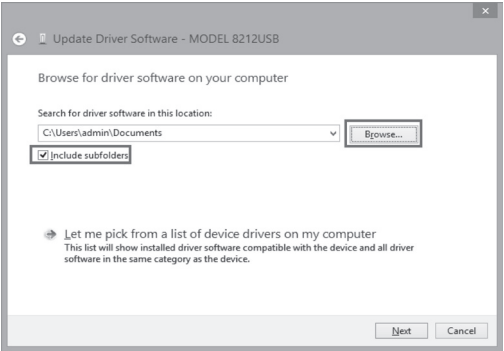


If neither (2) nor (3) appears, run "install.exe" from the CD.

- (4) Select "Browse my computer for driver software".



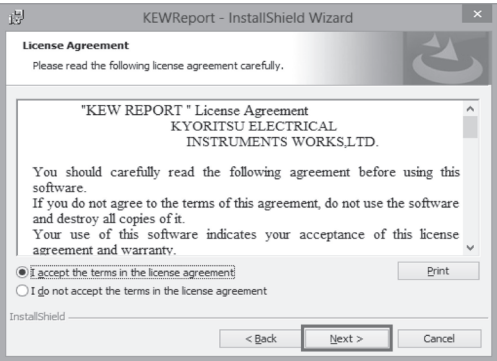
- (5) Check the box for "Include subfolders", and then click "Browse".



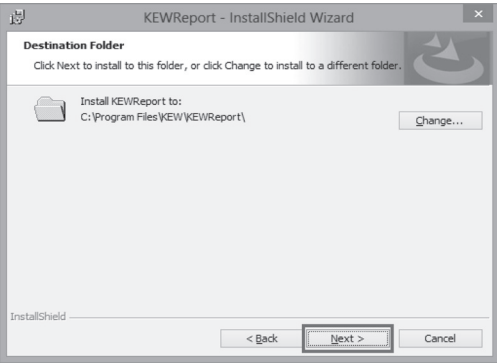
- (4) When the following window appears, click "Next".



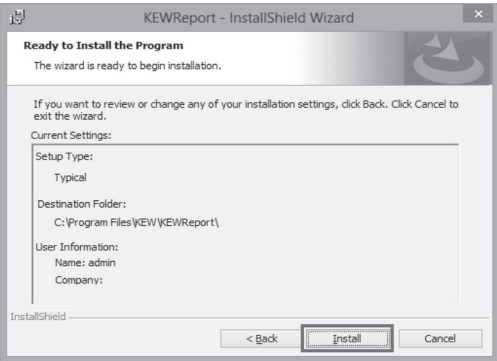
- (5) Read through and understand the License Agreement and click "I accept...", and then click "Next".



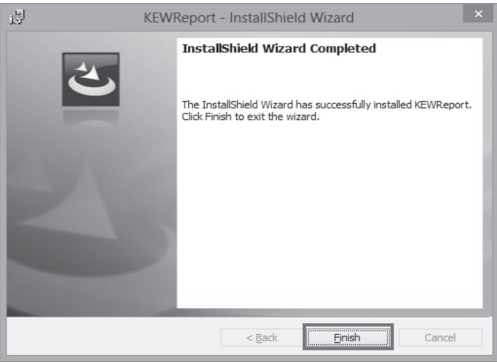
- (6) Click "Next".



- (7) Confirm the information on installation, and then click "Install" to start an installation.



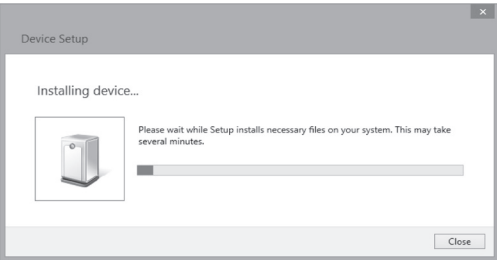
- (8) Click "Finish" when "InstallShield Wizard Complete" dialog box appears.



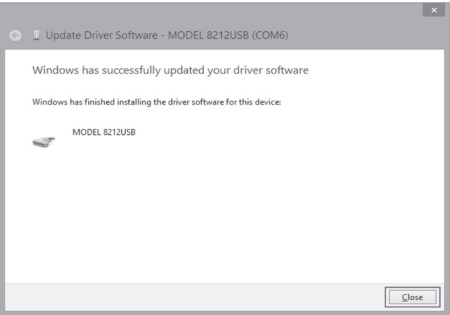
### 2. Installation of USB Driver

- (1) Connect MODEL8212 and your PC with the USB cable supplied with the instrument.

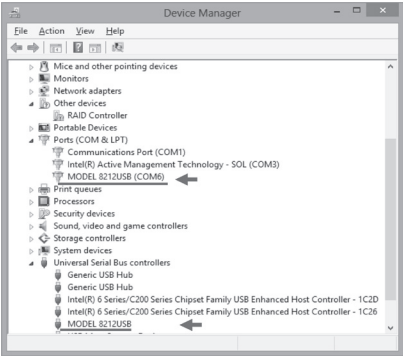
When the following window appears, install the driver according to the following procedure.



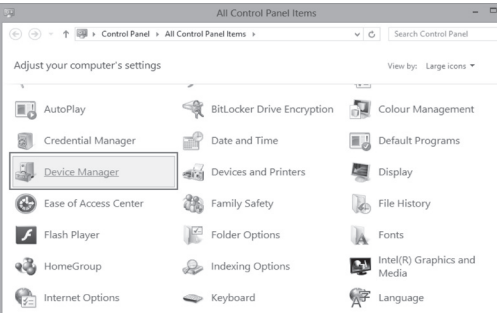
- (10) Repeat above step (3) through (6). Installation is completed when the wizard says "Windows has successfully updated your driver software". Click "Close".



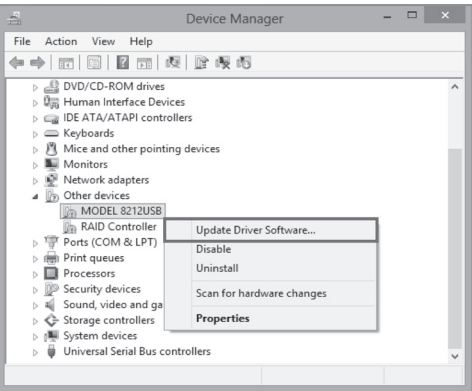
- (11) The following two icons will appear in the Device Manager when the driver is successfully installed.



- (2) Click "Control Panel" -> "Device Manager".



- (3) Click "Other devices" and then right-click on "MODEL8212". Then click "Update Driver Software".



### USB Driver Un-installation

When the installation of the USB driver is interrupted and re-installation cannot be done, follow the procedure below and delete the existing driver, and then install it again.

- (1) Connect your PC and the instrument with the USB cord.
- (2) Click the "Control Panel" in the Start menu.
- (3) Click "Device Manager" in the Control panel.
- (4) Right click on "MODEL8212 USB" under "Other devices".
- (5) Click "Uninstall" to uninstall the USB driver.



- (6) Remove the USB cord connecting your PC and the instrument once, and connect them again.

- (7) When "Found New Hardware Wizard" window appears, follow the procedures described in "USB Driver Installation" and install the driver.