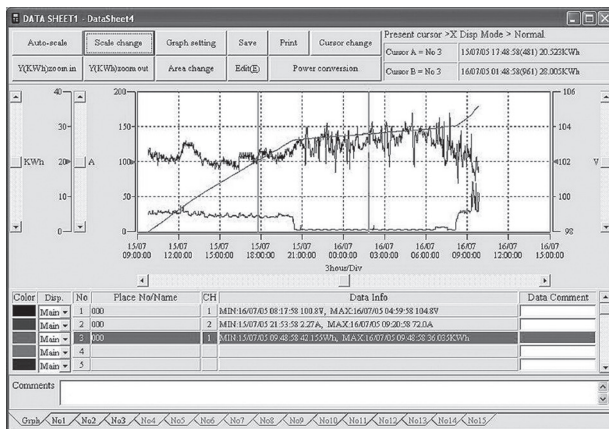


INSTALL MANUAL



PC software for Logger Series
5001, 5010/5020

KEW LOG Soft2



KYORITSU ELECTRICAL INSTRUMENTS
WORKS, LTD.

Contents

ENGLISH

1. Introduction	23
2. Installing “KEW LOG Soft 2”	24
3. Installing USB driver	28
4. Starting “KEW LOG Soft 2”	31
5. Features of “KEW LOG Soft 2”	32
6. Trouble shooting.....	32
 Precautions for installing USB driver	 33



This manual contains instructions how to install the software “KEW LOG Soft2” supplied with MODEL5001 and KEW5010/ 5020.

1. Introduction

● Interface

Our Loggers are equipped with USB interface.

Communication method: USB 2.0

This is an application software for Windows PC. The following can be done by using this software.

- * Data communication with our Loggers (5001 and 5010/5020)

- * Downloading the data files to PC for edit, analysis and print.

The downloaded data can be saved on a PC.

- * Adjusting settings of our Loggers.

● System Requirements

- OS(Operation System)

For supported OS, please check the version label of the CD case or visit our website.

- Display

1024 x 768 dots, 65536 colors or more

- HDD (Hard-disk space required)

1Gbyte or more

● Trademark

- Windows® is a registered trademark of Microsoft in the United States.

The latest software is available for download from our homepage.

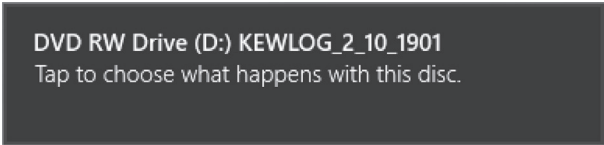
<http://www.kew-ltd.co.jp>

2. Installing “KEW LOG Soft2”

- (1) The following should be checked before installing this software.
- To prepare your system for installation, please close all open programs.
 - Be sure NOT to connect the instrument with the USB until installation completes.
 - Installation shall be done with Administrator right.
- (2) Insert the CD-ROM in your PC's CD-ROM drive.

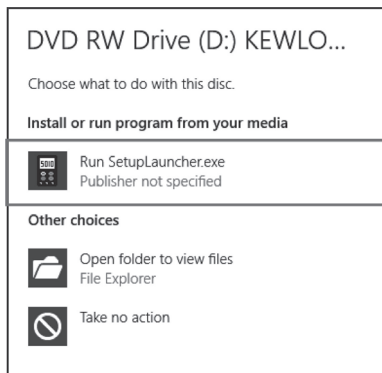
For Windows 8:

Left click on the following message when it appears at the upper right on the screen.



DVD RW Drive (D:) KEWLOG_2_10_1901
Tap to choose what happens with this disc.

The following pop-up will appear. Click “Run SetupLauncher.exe” .
If the User Account Control dialog box appears, click “Yes” .



If above pop-up does not appear, open “Explore” or “Computer” and run the “Run SetupLauncher.exe” in the CD icon.

For Windows 7 and Windows Vista:

Click “Run SetupLauncher.exe” when the following message appears on the screen.

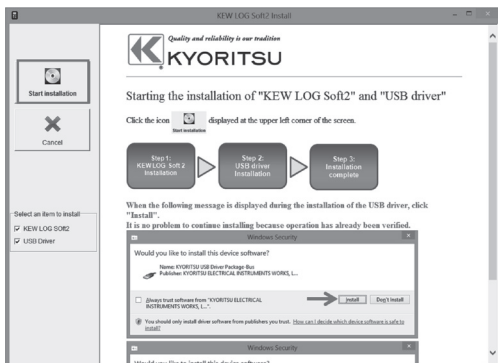


If the User Account Control dialog box appears, click “Yes”.

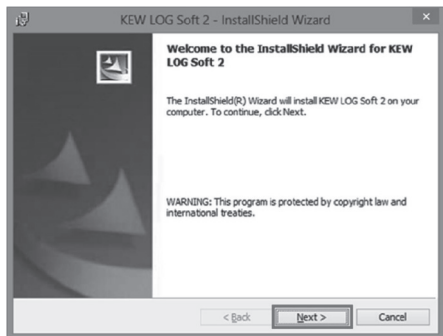
If above pop-up does not appear, open “Explore” or “Computer” and run the “Run SetupLauncher.exe” in the CD icon.

(3) The following window appears after clicking “Run SetupLauncher.exe”.

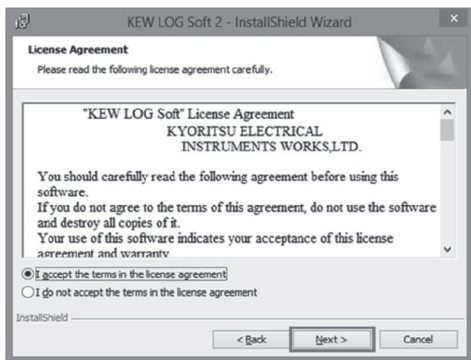
Click the “Start installation” icon displayed at the upper left of the window.



- (4) The following window will appear when the installation of “KEW LOG Soft2” starts. Click “Next” .

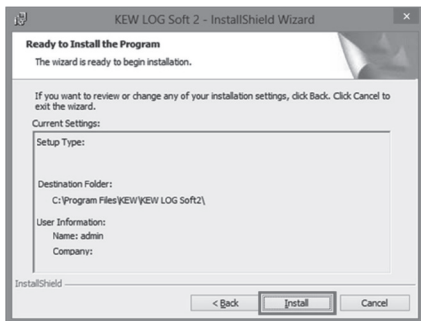


- (5) Read through and understand the License Agreement and click “I accept....” , and then click “ Next” .

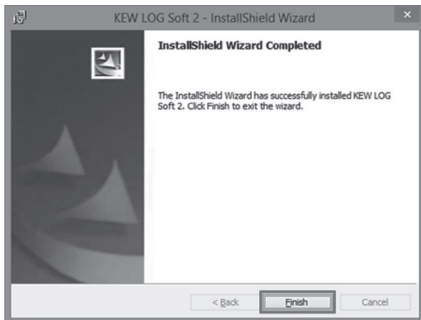


- (6) Click “Next” after entering the user information and other supplementary information.
- (7) Confirm the folder where the software will be installed in, and click “Next” .

- (8) Confirm the information on installation, and then click “Install” to start installation.



- (9) Click “Finish” when “InstallShield Wizard Complete” dialog box appears.



When above installation wizard is completed, your PC will be ready for the subsequent installation. Please refer to Chap. 3 “Installing USB driver” and install the USB driver.

How to un-install the PC Software:

Access to the “Control Panel” and double click on the “Add/ Remove Programs” and remove the “**KEW LOG Soft2**” .

3. Installing USB driver

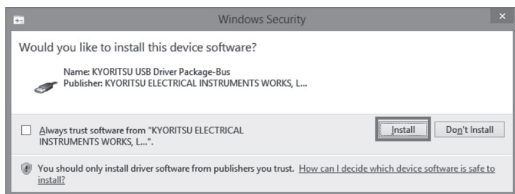
- (1) When the installation of KEW LOG Soft2 is completed, the following message will appear and the installation of the USB driver initiates. Click “Next” .



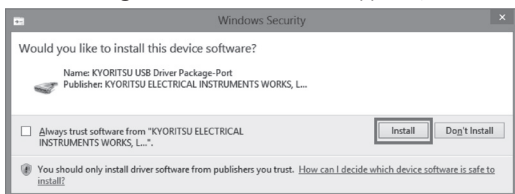
- (2) Read through and understand the End User License Agreement and click “I accept...”, and then click “Next” .



(3) If the following warning window appears, click “Install” .

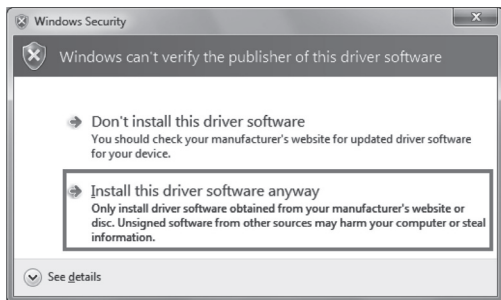


(4) If another warning window as shown below appears, click “Install” again.



Select “Install this driver software anyway” if the following warning window appears on the screen.

(There is no problem to continue installing because operation has already been verified.)



(5) Installation is completed when the wizard finishes. Click “Finish” .



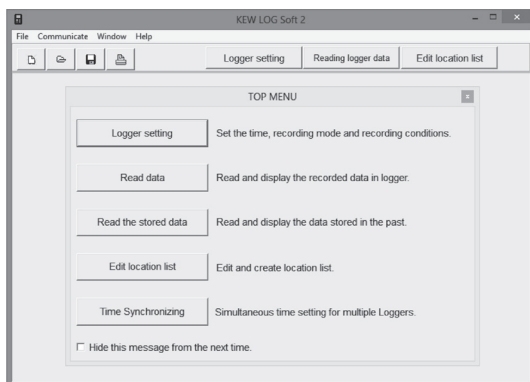
Now the USB driver installation is completed. Connect the Logger and the PC for data communication.

*** If the installer was interrupted before the driver could be installed, right click on the CD drive and click “Open” .
Find the “DRIVER” folder on the displayed window, and run
“KewLoggerUsbDriver100_setup.exe” to restart the installer.**

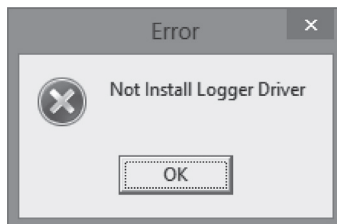
4. Starting “KEW LOG Soft2”

Double-click the “**KEW LOG Soft2**” icon on your desktop, or click “**Start**” -> “**Program**” -> “**KEW**” -> “**KEW LOG Soft2**” .

The main window for “KEW LOG Soft2” with top menu will appear. Select a desirable menu and download the recorded data from Logger or adjust settings.



* The following error message may appear after the installation of the USB driver is completed, when starting “KEW LOG Soft2” before connecting Loggers.



5. Features of “KEW LOG Soft2”

Features of “KEW LOG Soft2” are as follows.

◆ **Logger setting**

Set the time and recording conditions for Logger.

◆ **Data read**

Read the data from Logger, and display it in graphic and list forms.

◆ **Edit, print and save logger data**

Can abstract a part of data from the list of logger data, and can copy graph image and save data in text format (.csv).

◆ **Edit the location list**

Edit the location name corresponding to its location No.

◆ **Sync time setting**

Adjust the clocks of multiple Loggers simultaneously.

For further details, please refer to “KEW LOG Soft2 - Help” .

* Click the “KEW LOG Soft2-Help” icon on the desktop.

* Click “Help” on the “KEW LOG Soft2” window, and then click “KEW LOG Soft – Help” .

6. Troubleshooting

If you are having problems or questions, please visit our website and click the “Support” tab, and then click “General & Technical FAQ” -> “Loggers” .

For the latest news and information, visit our website.

<http://www.kew-ltd.co.jp>

Precautions for installing USB driver

Remarks and cautions:

For users using Windows2000/XP and purchased another model in logger series.

*** The following procedures are not necessary for the users who use a model in logger series for the first time and who use Windows Vista or later.**

For users who have already installed the USB driver on the CD of KEW LOG Soft2 Ver.2.06 or earlier:

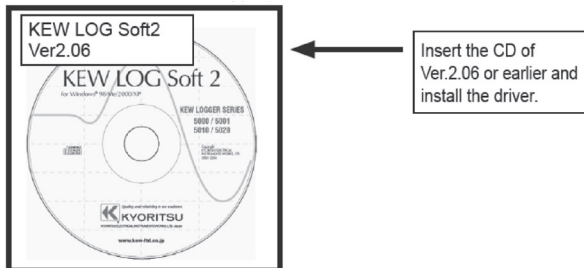
The following procedures need to be done when installing the USB driver on the CD of KEW LOG Soft2 Ver.2.07 or later.

For users who have a CD of KEW LOG Soft2 Ver.2.06 or earlier:
please refer to “I. For users who have a CD of KEW LOG Soft2 Ver.2.06 or earlier” .

If you do not have a CD of KEW LOG Soft2 Ver.2.06 or earlier, please refer to
“For users who do not have a CD of KEW LOG Soft2 Ver.2.06 or earlier” .

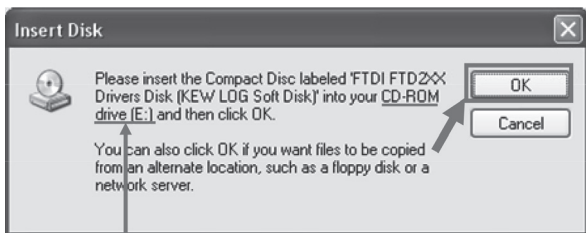
I. For users who have a CD of KEW LOG Soft2 Ver.2.06 or earlier

When installing the driver for additional new logger on Windows2000/XP, use the CD supplied with the Logger you purchased before.



The following window appears when installing the driver contained in the KEW LOG Soft2 Ver.2.07 or later.

Remove the CD and insert the KEW LOG Soft Ver. 2.06 or earlier, and then click "OK". Please follow the procedures below and install the driver.



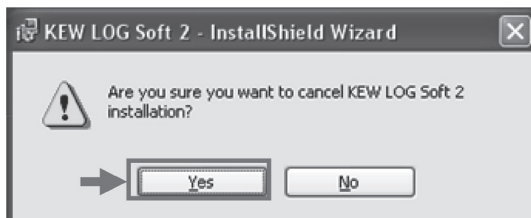
CD/ DVD drive and disk name depend on your PC environment.

Installation procedures

(1) Click "Cancel" when the following window appears after replacing the CD.



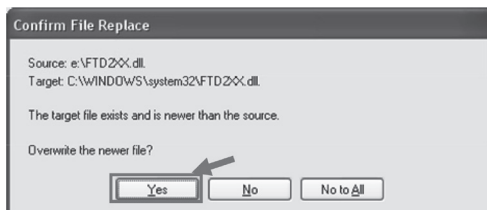
Then click "Yes" when the following message appears.



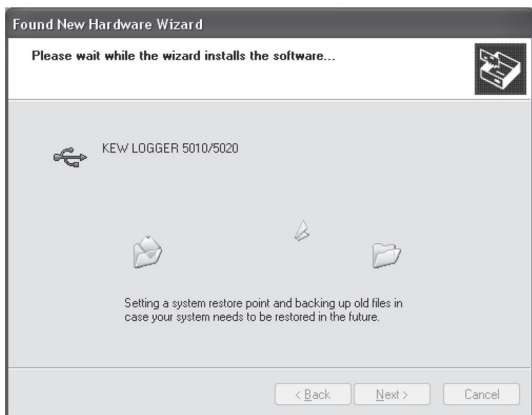
Click "Finish" when the following window appears.



(2) Click "Yes" when the following message appears.



After clicking “Yes”, the following window will appear.

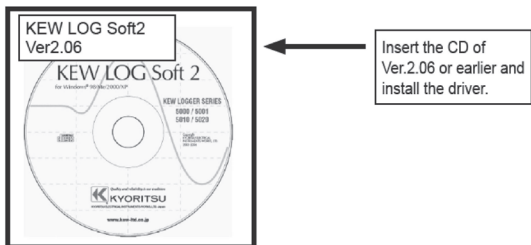


(3) The following complete message is displayed when the installation is completed. Click "Finish" and complete the installation.



II. For users who do not have a CD of KEW LOG Soft2 Ver.2.06 or earlier

* The version of KEW LOG Soft2 is labeled on the case.



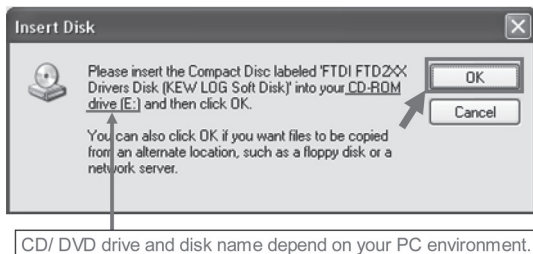
Please access to our website and click “DOWNLOAD” to find and download the driver for Windows2000/XP/Vista. Then install the downloaded driver according to the procedures below.

For download, please access to:

<http://www.kew-ltd.co.jp/en/download/index.html>

* Download instructions are available on our website.

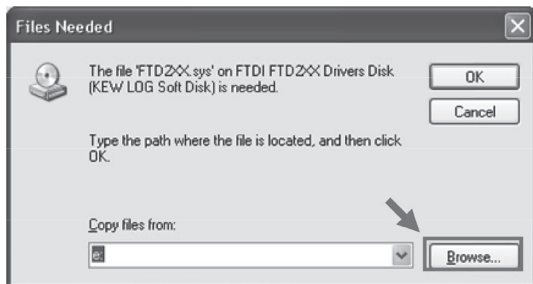
The following window appears when installing the driver contained in the KEW LOG Soft2 Ver.2.07 or later.



Click “OK” and install the driver.

Installation procedures

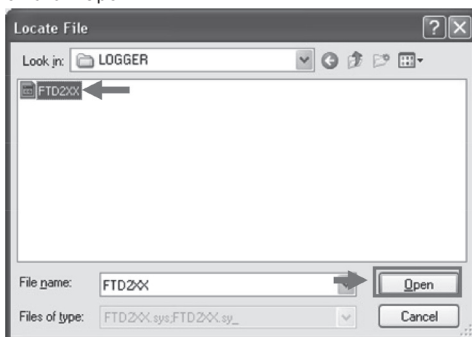
- (1) Click "OK" when Insert Disk window appears.
- (2) Click "Browse..." when "Files Needed" window appears.



- (3) Then a window showing file location is displayed.



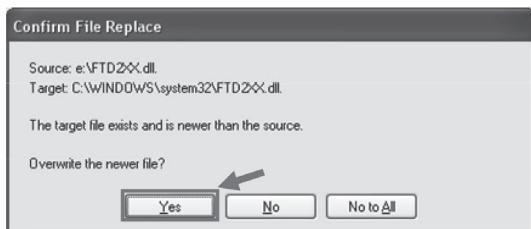
- (4) Unzip the self-extracting file and select "FTD2XX" contained in the new folder. Then click "Open".



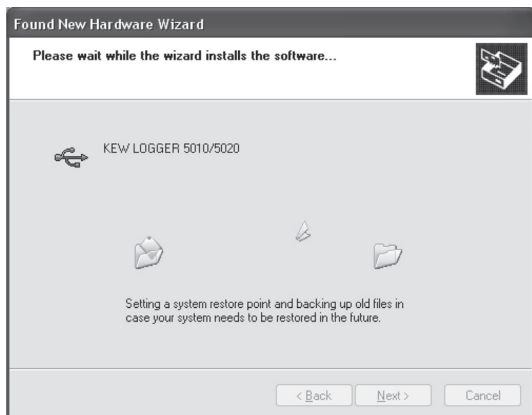
- (5) Click "OK".



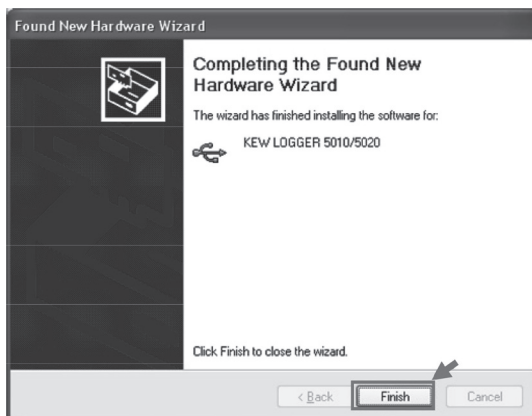
- (6) Click "Yes" if the following message is displayed.



After clicking “Yes” , the following window will appear.



(7) The following complete message is displayed when the installation is completed. Click "Finish" and complete the installation.





**KYORITSU ELECTRICAL
INSTRUMENTS
WORKS, LTD.**

No.5-20, Nakane 2-chome, Meguro-ku,
Tokyo, 152-0031 Japan

Phone: +81-3-3723-0131

Fax: +81-3-3723-0152

Factory: Ehime

www.kew-ltd.co.jp