

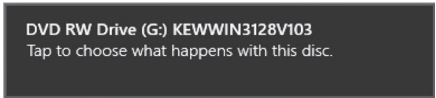
Driver Installation Manual for "KEW Windows for KEW3128"

This manual contains explanations how to install the special application and the USB driver on Windows 8 PCs.

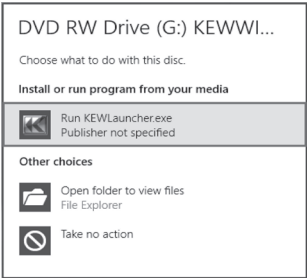
1. Installation of KEW Windows for KEW3128

- (1) The following should be checked before installing this application.
- To prepare your system for installation, please close all open programs.
 - Be sure NOT to connect the instrument with the USB until installation completes.
 - Installation shall be done with Administrator right.
 - To use KEW Windows for KEW3128, .NET Framework 3.5 is required.
- If .NET Framework 3.5 is not installed in your PC, it will be automatically installed when installing this application.
- An internet connection is required to install .NET Framework 3.5.

- (2) Insert the CD-ROM in your PC's CD drive. Then following pop-up will appear at the upper right on the screen. Left-click on this box.



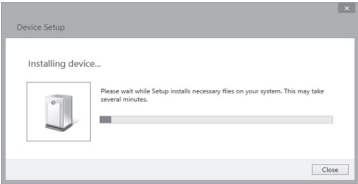
- (3) Click and select "Run KEWLauncher.exe" when the following box appears.
- If User Account Control dialog box appears, click "Yes".



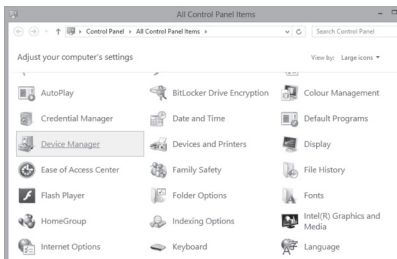
If neither (2) nor (3) appears, run "KEWLauncher.exe" from the CD.

2. Installation of USB Driver

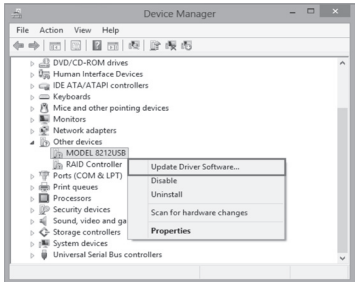
- (1) Connect MODEL8212 and your PC with the USB cable supplied with the instrument.
- When the following window appears, install the driver according to the following procedure.



- (2) Click "Control Panel" -> "Device Manager".



- (3) Click "Other devices" and then right-click on "MODEL8212".
- Then click "Update Driver Software".



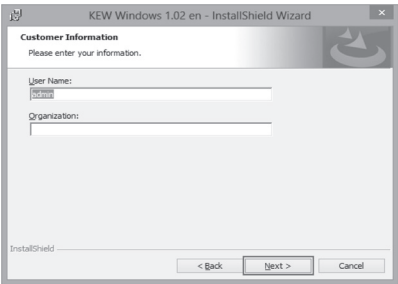
- (4) When the following window appears, click "Next".



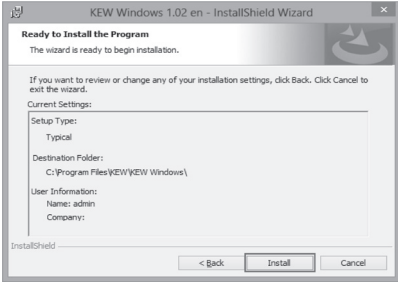
- (5) Read through and understand the License Agreement and click "I accept...", and then click "Next".



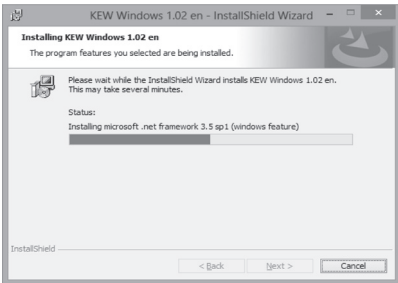
- (6) Click "Next" after entering the user information and other supplementary information.



- (7) Confirm the information on installation, and then click "Install" to start an installation.



The following box will appear if .NET Framework3.5 is not installed in your PC.



If a message requiring restarting your PC is displayed, click "Yes" and restart your PC.

Run "KEWSetupLauncher.exe" from the CD after restarting the PC.

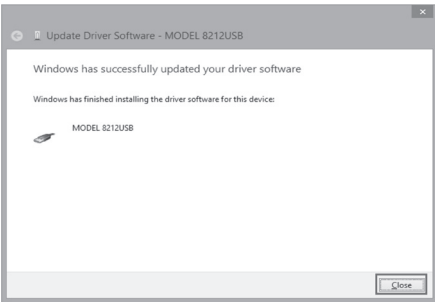
- (7) When the following confirmation message appears, after clicking "Next", click "Install".



Select "Install this driver software anyway" if the following warning window appears. (There is no problem to continue installing because operation has already been verified.)



- (8) Install is completed when the wizard says "Windows has successfully updated your driver software".
- Click "Close".



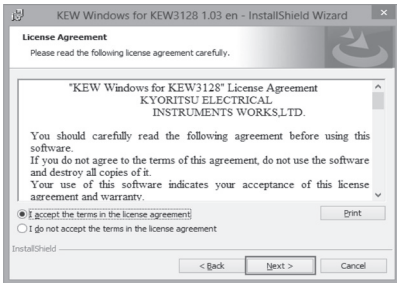
- (8) Click "Finish" when "InstallShield Wizard Complete" dialog box appears.



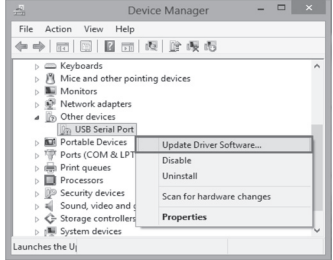
- (9) When the installation wizard completes, subsequent installation initiates automatically.
- Click "Next".



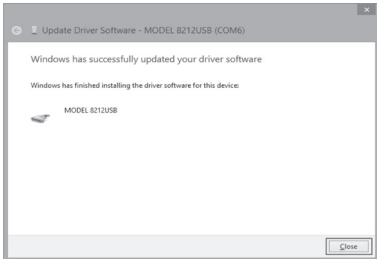
- (10) Read through and understand the License Agreement and click "I accept...", and then click "Next".



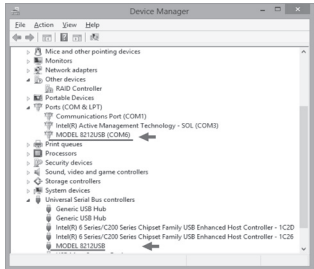
- (9) Click "Other devices" under the Device Manager, and then right-click on "USB Serial Port".
- Then click "Update Driver Software".



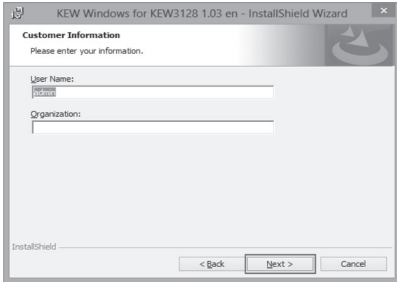
- (10) Repeat above step (3) through (6). Installation is completed when the wizard says "Windows has successfully updated your driver software".
- Click "Close".



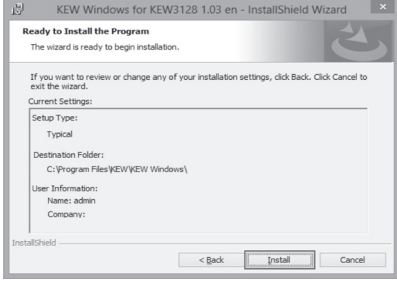
- (11) The following two icons will appear in the Device Manager when the driver is successfully installed.



- (11) Click "Next" after entering the user information and other supplementary information.



- (12) Confirm the information on installation, and then click "Install" to start an installation.



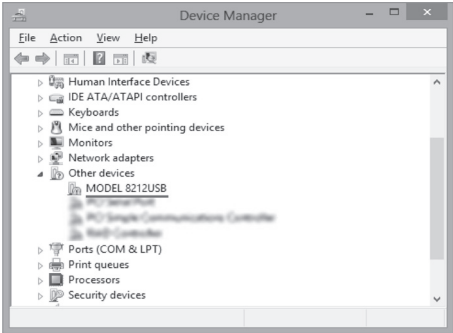
- (13) Click "Finish" when "InstallShield Wizard Complete" dialog box appears.



USB Driver Un-installation

When the installation of the USB driver is interrupted and re-installation cannot be done, follow the procedure below and delete the existing driver, and then install it again.

- (1) Connect your PC and the instrument with the USB cord.
- (2) Click the "Control Panel" in the Start menu.
- (3) Click "Device Manager" in the Control panel.
- (4) Right click on "MODEL8212 USB" under "Other devices".
- (5) Click "Uninstall" to uninstall the USB driver.



- (6) Remove the USB cord connecting your PC and the instrument once, and connect them again.
- (7) When "Found New Hardware Wizard" window appears, follow the procedures described in "USB Driver Installation" and install the driver.